



range introduction

Onix Plus™ Floorboxes and Power Grommets are a unique, innovative solution to hard floor power and data distribution requirements in screed floors with coverings such as laminate, wood, stone and marble.

Stylish and robust design offers superior load bearing performance and greater durability. Floorbox lids with snorkel or plain lid provide wet wash solutions.

Used in conjunction with the Cablelink Plus Screed Ducting System these products are ideal for reception areas, offices, airports, shopping malls and exhibition halls.

- **Wet washable and IP44 when not in use**
- | **Tested to EN50085-2-2 to accept 10,000N load**
- | **Selection of lid recess depths available, allowing for various floor depths**
- | **Designed to support Cat 6 structured cabling systems**
- | **Wide range of power and data accessories available to meet all requirements**
- | **Quality, reliability and safety come as standard**
- | **Provision of RCD protection supports compliance with the 17th Edition Wiring Regulations**
- | **5 year guarantee**

screeded floor systems

Onix Plus™ Floorbox with Snorkel Cord Outlet Lid

SNORKEL CORD OUTLET

- Supplied with a 9mm wide flange to cater for poorly cut tile infills

ATTRACTIVE, AESTHETIC LIDS

- Stylishly designed
- Recess depth options available to suit

STAINLESS STEEL PLATE

- Eliminates rusting

STAGGERED PLATE

- Provides strain relief clearance for moulded plug tops

SERVICE OUTLET BOX

- Screed depths: 80-110mm
- Flat sided base design ensures a stronger screed solution and faster taping

**TESTED TO EN50085-2-2
TO ACCEPT 10,000N LOAD**

WET WASHABLE

- Plain lid and snorkel design allows floor to be washed even when in use

**ROBUST LOAD PLATE**

- Superior load bearing performance
- Ideal for areas of heavy foot traffic
- A tile lifter should be used to lift all Onix Plus lids

SQUARE BOX OPTION

- 90° rotation of floorbox for system flexibility

COMPARTMENT SEGREGATION

- Height adjustable - 25 to 45mm
- Set at 35mm as standard

BASE FIXING FEET

- 'Fast fix' installation



Onix Plus™ Boxes and Snorkel Lids

The Base Units are installed prior to screeding. Designed for use with the Cablelink Plus Screed Ducting System (see page 64 for more details). Snorkel design allows floor to be washed even when in use – IP44 when not in use.

Onix Plus Box selector guide

- Service Outlet Boxes and Junction Boxes are ordered as two parts – “Base” and “Lid”
- Base – identify screed depth, number of compartments required and preferred box size
- Lid – choice of lid type, available with and without snorkel
- Junction Box – supplied complete with disposable steel screed lid and cable flyover
- Accessory Plates – select from wide range of power and data see page 54 for details
- Alternative deeper Junction Boxes and Screed Base Unit depths are available - please contact MK ME office for details

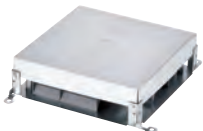
Screed Base Units: Standard



BASE SIZE COMPARTMENT	200 x 200mm 2	265 x 265mm 2	265 x 265mm 3	340 x 340mm 3	340 x 340mm 4
Screed 80-110mm 35mm wiring space	NXB200X-2	NXB265X-2	NXB265X-3	NXB340X-3	NXB340X-4

Wiring space can also be reduced to 25mm when used in shallow screed depths. Both require the use of a plate height adjustment kit - part number CUBA-1 or CUBA-2. For 200x200mm base, use ‘Compact’ power and data plates only – see page 54. Supplied with two metal trunking entry side plates as standard. See “page ??” for alternative plates.

Junction Boxes



SIZE	200 x 200mm	265 x 265mm	340 x 340mm
55-80mm	NXJ200	NXJ265	NXJ340
80-110mm	NXJ200X	NXJ265X	NXJ340X

Disposable steel screed lid and cable flyover supplied as standard. **LIDS MUST BE ORDERED SEPERATELY.** Supplied with four side adaptor plates, 2xblank and 2xmetal trunking plates. Increased screed depth junction boxes available on request.

Box Lid: Snorkel Lid



SIZE	200 x 200mm	265 x 265mm	340 x 340mm
DEPTH 80-110 MM			
Depth 15mm	NXLS200X-15	NXLS265X-15	NXLS340X-15
Depth 20mm	NXLS200X-20	NXLS265X-20	NXLS340X-20
Depth 25mm	NXLS200X-25	NXLS265X-25	NXLS340X-25
Depth 30mm	NXLS200X-30	NXLS265X-30	NXLS340X-30

See page 97 to determine the minimum screed depth/finished floor depth combination required to enable the snorkel lid to close. All supplied as stainless steel lid with snorkel. Lids are supplied with frame and fittings. Depth = Lid recess depth.

screeded floor systems

Onix Plus™ Floorbox with Round Metal Lid *

SNORKEL CORD OUTLET

- Supplied with a 9mm wide flange to cater for poorly cut tile infills

**WET WASHABLE**

- Plain lid and snorkel design allows floor to be washed even when in use

ALUMINIUM LID WITH RIBBED FINISH

- Strong wear resistant and non-slip surface

STAINLESS STEEL PLATE

- Eliminates rusting

STAGGERED PLATE

- Provides strain relief clearance for moulded plug tops

**SERVICE OUTLET BOX**

- Screed depth of 80-110mm
- Flat sided base design ensures a stronger screed solution and faster taping

COMPARTMENT SEGREGATION

- Height adjustable - 25 to 45mm
- Set at 35mm as standard

BASE FIXING FEET

- 'Fast fix' installation



*Available soon. Contact MK ME office for further details

Onix Plus™ Floorbox with Round Metal Lid *



Screed Base Units : For Round Metal Lid with Snorkel



PART NO.	DESCRIPTION
NXB370X-3	Screed base 80-110mm (370 x 370 mm)

Box Lid: Round Metal Lid with Snorkel



PART NO.	DESCRIPTION
NXLR	Round Die-Cast Aluminium Lid with Snorkel

Lids are supplied with frame and fittings.

screeded floor systems

Onix Plus™ Floorbox with Edge Cord Outlet Lid

TESTED TO EN50085-2-2
TO ACCEPT 10,000N LOAD

ROBUST CORD CAPS

- Designed for improved retention

STAINLESS STEEL PLATE

- Eliminates rusting

STAGGERED PLATE

- Provides strain relief clearance for moulded plug tops

OUTLET BOX

- Option of two screed depths: 55-80mm and 80-110mm
- Flat sided base design ensures a stronger screed solution and faster taping

ATTRACTIVE, AESTHETIC LIDS

- Stylishly designed
- Lid options allow for various floor coverings to be used

ROBUST LOAD PLATE

- Superior load bearing performance
- Ideal for areas of heavy foot traffic
- A tile lifter should be used to lift all Onix Plus lids

SQUARE LIDS

- 90° rotation of floorbox for system flexibility

COMPARTMENT SEGREGATION

- Height adjustable 25 to 45mm
- Set at 35mm as standard

BASE FIXING FEET

- 'Fast fix' installation



Cord Outlet Lids are not suitable
for Wet Wash applications.

DESIGNED FOR USE WITH CABLELINK PLUS SCREED SYSTEM

Onix Plus™ Boxes, Cord Outlet and Blank Lids

The Base Units are installed prior to screeding. Designed for use with the Cablelink Plus Screed Ducting System – see page 64 for more details. Blank Lid is suitable for wet wash applications.

Onix Plus Box selector guide

- Service Outlet Boxes and Junction Boxes are ordered as two parts, “Base” and “Lid”
- Junction Boxes – are supplied as a base and cable flyover
- Base – identify screed depth, number of compartments required and preferred box size
- Lid – choice of lid type. Cord Outlet Lid or Blank Lid. Cord caps must be ordered separately
- Accessory Plates – select from wide range of power and data options, see page 54 for details
- Alternative deeper Junction Boxes and Screed Base Unit depths are available - please contact MK ME office for details

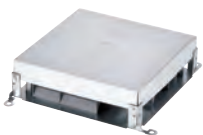
Screed Base Units: Standard



BASE SIZE COMPARTMENT	200 x 200mm 2	265 x 265mm 2	265 x 265mm 3	340 x 340mm 3	340 x 340mm 4
Screed 55-80mm 35mm wiring space	NXB200-2	NXB265-2	NXB265-3	NXB340-3	NXB340-4
Screed 80-110mm 35mm wiring space	NXB200X-2	NXB265X-2	NXB265X-3	NXB340X-3	NXB340X-4

Wiring space can also be reduced to 25mm when used in shallow screed depths. Both require the use of a plate height adjustment kit - part number CUBA-1 or CUBA-2. For 200x200mm base, use ‘Compact’ power and data plates only – see page 54. Supplied with four side adaptor plates, 2xblank and 2xmetal trunking plates. See page 58 for alternative plates. If screed depth is 55mm, reduce wiring space to 25mm by use of suitable CUBA kit and use side entry power socket outlets – see page 54.

Junction Boxes



SIZE	200 x 200mm	265 x 265mm	340 x 340mm	340x340mm
55-80mm	NXJ200	NXJ265	NXJ340	NXJ340-4
80-110mm	NXJ200X	NXJ265X	NXJ340X	NXJ340X-4

Supplied complete with a disposable steel screed lid and cable flyover as standard. **LIDS MUST BE ORDERED SEPERATELY.** Supplied with two metal trunking entry side plates as standard. See “page 54 for alternative plates.

Box Lids: Cord Outlet Lid



SIZE	200 x 200mm	265 x 265mm	340 x 340mm
DEPTH 55-80MM			
Depth 15mm	NXLC200-15	NXLC265-15	NXLC340-15
Depth 20mm	NXLC200-20	NXLC265-20	NXLC340-20
Depth 25mm	NXLC200-25	NXLC265-25	NXLC340-25
Depth 30mm	NXLC200-30	NXLC265-30	NXLC340-30
DEPTH 80-110MM			
Depth 15mm	NXLC200X-15	NXLC265X-15	NXLC340X-15
Depth 20mm	NXLC200X-20	NXLC265X-20	NXLC340X-20
Depth 25mm	NXLC200X-25	NXLC265X-25	NXLC340X-25
Depth 30mm	NXLC200X-30	NXLC265X-30	NXLC340X-30

CORD CAP	
Part Number	Description
NXLC-01GRY	Cord Cap – Grey (RAL 7011)
NXLC-01LGY	Cord Cap – Light Grey (RAL 7046)
NXLC-01BEG	Cord Cap – Beige (RAL 10109)

Cord outlet lid is not suitable for wet wash applications. Supplied as stainless steel lid. Cord caps must be ordered separately. Lids are supplied with frame and fittings. Depth = Lid recess depth

Box Lids: Blank Lid



SIZE	200 x 200mm	265 x 265mm	340 x 340mm
DEPTH 55-80MM			
Depth 15mm	NXLB200-15	NXLB265-15	NXLB340-15
Depth 20mm	NXLB200-20	NXLB265-20	NXLB340-20
Depth 25mm	NXLB200-25	NXLB265-25	NXLB340-25
Depth 30mm	NXLB200-30	NXLB265-30	NXLB340-30
DEPTH 80-110MM			
Depth 15mm	NXLB200X-15	NXLB265X-15	NXLB340X-15
Depth 20mm	NXLB200X-20	NXLB265X-20	NXLB340X-20
Depth 25mm	NXLB200X-25	NXLB265X-25	NXLB340X-25
Depth 30mm	NXLB200X-30	NXLB265X-30	NXLB340X-30

Blank Lid is suitable for wet wash applications. Supplied as a stainless steel lid. Lids are supplied with frame and fittings. Depth = Lid recess depth

screeded floor systems

Onix Plus™ Metal Power Grommet

FORGED METAL LID AND FRAME

- Designed for robustness in use

WET WASH**SEALING GASKET**

- IP44 rated to prevent water ingress when lid is closed

SIMPLE FLOOR THICKNESS ADJUSTMENT

- Accommodates floor covering thicknesses between 15mm and 30mm

TWO DEPTHS OF SCREED BASE

- Choice of 53-80mm and 80-110mm screed depth range

BASE FIXING FEET

- Fast Fix Installation

CHOICE OF KNOCKOUTS

- Choose from 6x20mm or 6x25mm knockouts

**COLOUR OPTIONS**

- Available in Aluminium, Nickel and Brass finish

Onix Plus™ Metal Power Grommet

The range of power grommets provide access to power in areas where standard plastic grommets are not robust enough, where improved aesthetics are required, or a wet wash solution is required.

IP44 WET WASH

Specifically designed to seal against water ingress to IP44 when the lid is closed, allowing the floor to be washed.

Onix Plus Metal Grommet selector guide

- Base – select preferred base depth (use for screeded floors only)
- Grommet – choose finish of unserviced grommet
- Select either Unswitched Socket Outlet or Unserviced Data Outlet to service the grommet
- Serviced Data Grommets are available via the Design Service
- Use for screed floors only, compatible with conduit only

Screed Base Units



PART NO.	DESCRIPTION
NXGB100-1	Grommet Base Unit 55-80mm depth
NXGB100X-1	Grommet Base Unit 80-110mm

* A minimum finished floor thickness of 68mm is required. (Screed and floor tile thickness added together). Socket outlets feature the MK Electric 3-pin safety shutter.

* Conduit only, not compatible with ducting

Serviced Power Grommets



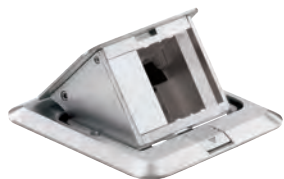
NXG-ALP

PART NO.	DESCRIPTION
NXG-ALP	13A 1G Switched Socket Outlet Grommet – Aluminium
NXG-BRP	13A 1G Switched Socket Outlet Grommet – Brass
NXG-NIP	13A 1G Switched Socket Outlet Grommet – Nickel

Socket outlets feature the MK Electric 3-pin operated safety shutter.

*Not dual earth

Unserviced Data Grommets



NXG-ALD

PART NO.	DESCRIPTION
NXG-ALD	Unserviced Grommet with 1x 50x50mm Euro aperture - Aluminium
NXG-BRD	Unserviced Grommet with 1x 50x50mm Euro aperture - Brass
NXG-NID	Unserviced Grommet with 1x 50x50mm Euro aperture - Nickel

screeded floor systems

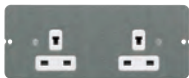
Accessory Plates

Accessory plates are common to most ranges, they will fit all Onix Plus™, Cablelink Plus Single Pan, Screed and Flush Floorboxes. Standard Plates are for use with 265x265mm, 340x265mm and 340x340mm Floorboxes. Compact Plates are for use with 200x200mm Floorboxes only. Both Standard and Compact Plates are supplied in Light Grey (LGY) finish.

Serviced Power Plates



CXP10730



CXP10731NS



CXP10745



CXP10720



CXP10741

STANDARD PART NO.	COMPACT PART NO.	DESCRIPTION
CXP10730*†	CXPC10730*†	2G 13A Switch Socket Outlet
CXP10730NS*†	CXPC10730NS*†	2G 13A Switch Socket Outlet Non-Standard (T Pin)
CXP10731†	CXPC10731†	2G 13A Socket Outlet
CXP10731NS†	CXPC10731NS†	2G 13A Socket Outlet Non-Standard (T Pin)
CXP10745*	CXPC10745*	2G 13A Angled Socket Outlet
CXP10735**	CXPC10735**	2G 13A RCD Switch Socket Outlet
CXP10760		2G 13A Switch Socket Outlet – Side Wired
CXP10720*		3G 13A Socket Outlet
CXP10740	CXPC10740**	2G 16A 2P+E German Socket Outlet (non UK)
CXP10741	CXPC10741	2G 15A 127V USA Socket Outlet (non UK)

* For Clean Earth wiring – add suffix 'CE' e.g CXP10730**CE**.

Clean Earth switched power plates are identified with red rockers, unswitched with red sockets.

† Plates are supplied with the MK Electric 3-pin safety shutter.

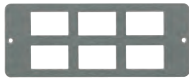
Compact Plates (power and data) are for use with 200x200mm bases only.

**Minimum 45mm wiring space required.

Unserviced Data Plates



CXP20215



CXP20301



CXP30501



CXP30201

STANDARD PART NO.	COMPACT PART NO.	DESCRIPTION
CXP20101	CXPC20101	2 x LJU/2 Apertures
CXP20200	CXPC20200	2 x LJU6C Apertures
CXP20201*	CXPC20201*	4 x LJU6C Apertures
CXP20215	CXPC20215	4 x LJU6C Wave Apertures
CXP20205	CXPC20205	4 x Krone Apertures
CXP20301	CXPC20301	6 x LJU6C Apertures
CXP30501	CXPC30501	2 x Euro 50x50mm Apertures
CXP30503		1 x Euro 150x50mm Aperture
CXP30502	CXPC30502	2 x 45x45mm Apertures
CXP20117	CXPC20117	4 x Alphasnap (Aperture 47.5mm x 23.6mm)
CXP20500	CXPC20500	4 x ST Fibre Connector Apertures
CXP30201	CXPC30201	Blank Plate

* Data apertures are supplied as knockouts.

Compact Plates (power and data) are for use with 200x200mm bases only.

Side Adaptor Plates



PLATE TYPE/BOX SIZE	200 x 200mm	265 x 265mm	340 x 340mm
Blank	CUBP200-01	CUBP265-01	CUBP340-01
Round Conduit*	CUBP200-02	CUBP265-02	CUBP340-02
PVC 60x25mm	CUBP200-03	CUBP265-03	CUBP340-03
PVC 90x35mm	CUBP200-04	CUBP265-04	CUBP340-04
PVC 50x25mm	CUBP200-05	CUBP265-05	CUBP340-05
PVC 75x25mm	CUBP200-06	CUBP265-06	CUBP340-06
PVC 100x25mm	CUBP200-07	CUBP265-07	CUBP340-07
Metal Ducting	CUBP200-08	CUBP265-08	CUBP340-08

See page 63 for information regards PVCu ducting, page 64 for metal ducting.

* Knockouts 20mm and 25mm.

Optional Extras

PART NO.	DESCRIPTION
NXLC-01GRY	Cord Cap – Grey
NXLC-01LGY	Cord Cap – Light Grey
NXLC-01BEG	Cord Cap – Beige
CUBA-1	Plate Height Adjustment Kit +/- 10mm. Suitable for 265x265mm and 340x265mm boxes only
CUBA-2	Plate Height Adjustment Kit +/- 10mm. Suitable for 100x200mm and 200x200mm boxes only
CX-10	Earthing Kit, pack of 10